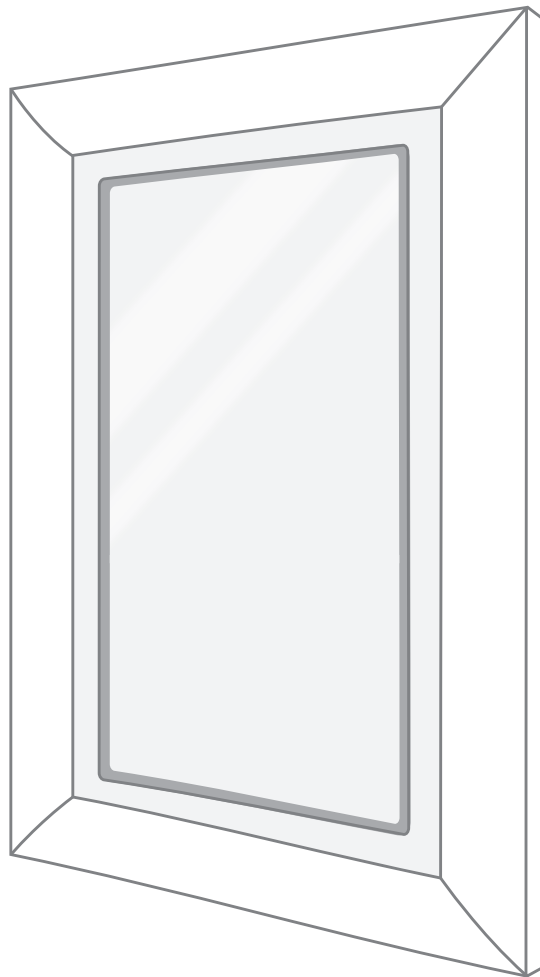


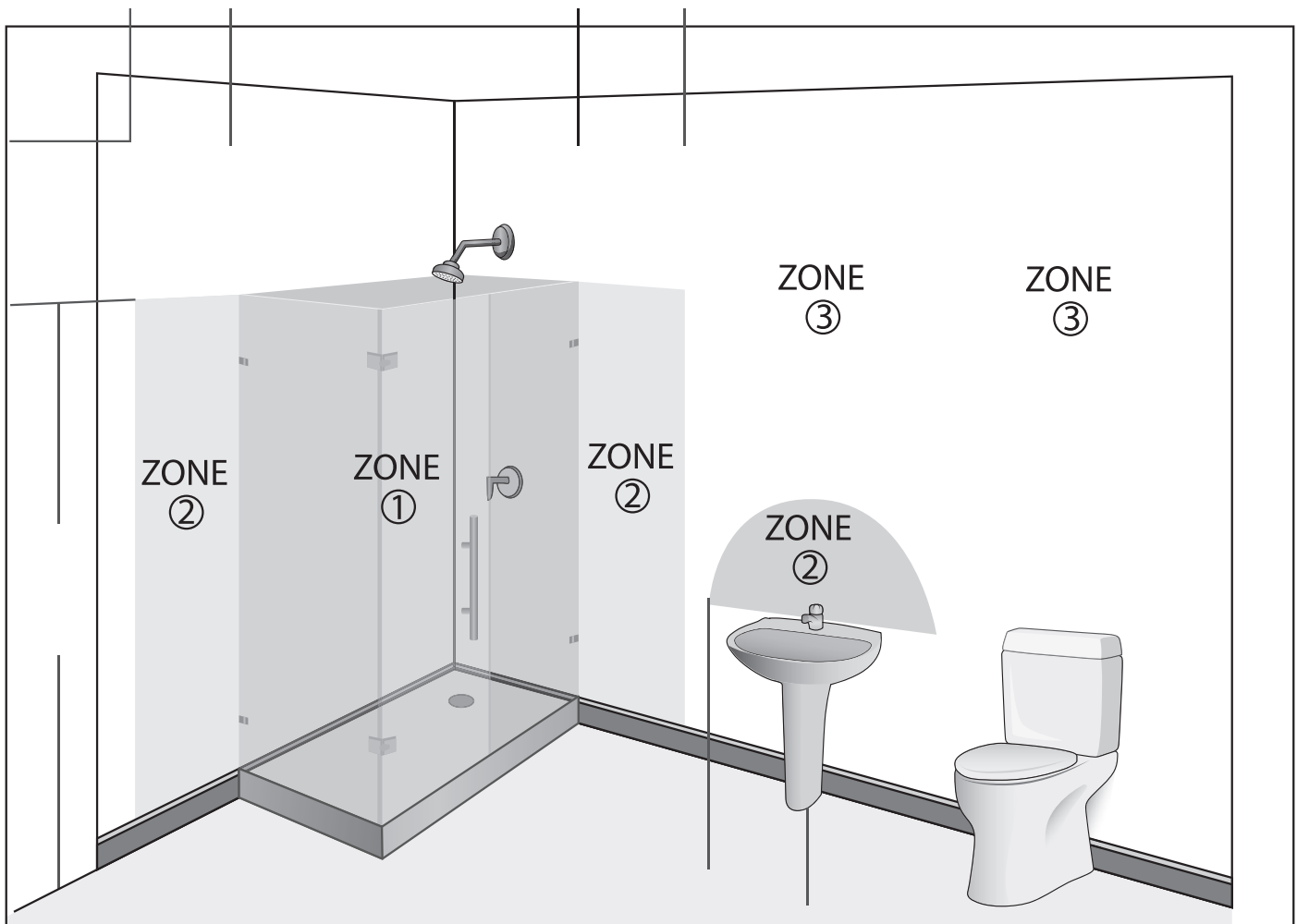
ELSIE

Bathroom Mirror Installation & User Guide



WARNING

- All fittings must be installed in accordance with current IEE wiring regulations. If in doubt, consult a qualified electrician.
- Switch off the electrical supply at the main circuit board BEFORE installation and maintenance.
- Suitable for Bathroom Zones 2, 3 and non bathroom/dry areas. See diagram below.
- NOT suitable for above baths or Zone 1 nor for installation in Saunas, Steam Rooms or Shower Cubicles.
- DO NOT connect to a plug and socket outlet. Suitable for indoor use only.
- DO NOT fix to damp or conductive surfaces.
- Site well away from curtains and fabrics.
- Never cover the mirror.
- Switch off after use.



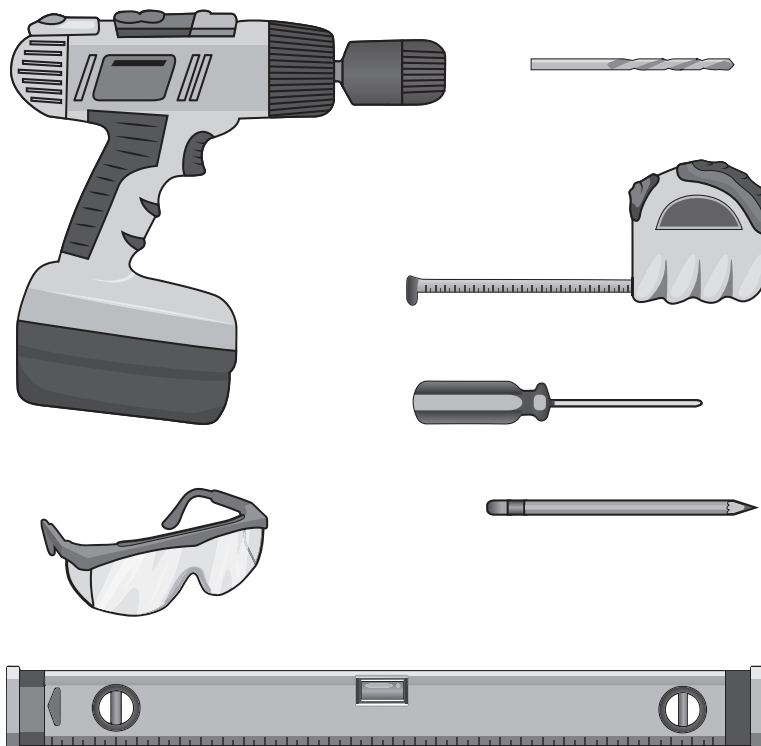
IMPORTANT—BEFORE YOU BEGIN

- Inspect the product immediately upon receipt for transit damage or missing parts.
- In the rare case, you may see some residue on the corners on of the frame. This is common and can be easily dealt with by cleaning it off with a clean piece of cloth (microfiber is preferable) and water
- Handle the product with care and protect against knocks to all sides and edges of the glass.
- Make sure that you have all the tools you need to complete the job.
(SEE BELOW)
- Ensure there are no hidden pipes or cables in the wall before drilling.
- If drilling holes in ceramic tiles use a piece of masking tape on the tile to stop the drill bit from slipping.

Aftercare Instructions

- Clean using a soft dry cloth only when turned off.
- Never use cleaning agents or abrasive materials.
- Do not allow moisture to come into contact with lamps.

TOOLS USED



ELECTRICAL WIRE INFORMATION

Elsie Electrical Connection

The LED Driver inside Elsie mirror already has converted the electric to 110 volts. You are able to connect lead coming out the back of the mirror directly to your electrical connection box.

The Lead Contains 3 Wires:

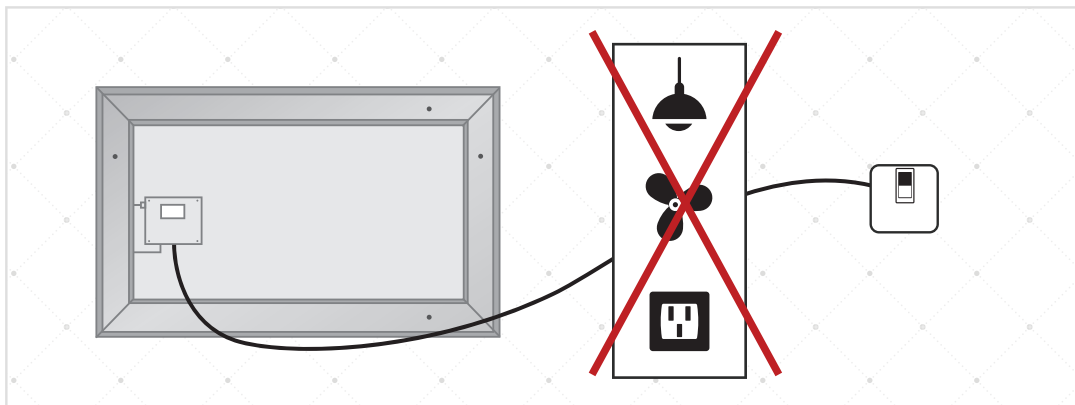
COPPER WIRE (GREEN) = *GROUND WIRE*...Connect to *GROUND WIRE* in your box, or to the box as a ground.

WHITE (or BROWN) = *NEUTRAL WIRE*...Connect to the *WHITE NEUTRAL WIRE* in your box.

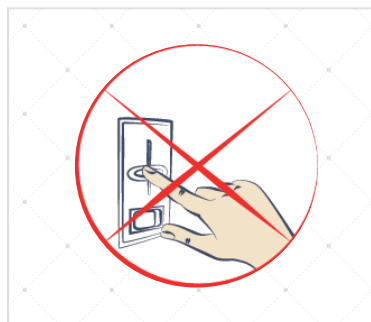
BLACK (or BLUE) = *HOT WIRE*...Connect to the *BLACK HOT WIRE* in your box.

The Elsie wires will be connected to your 110 Volt electric box. This should be placed in the wall, behind your Elsie Mirror. The suggested method for placement is towards the center, however there is flexibility with the lead wire.

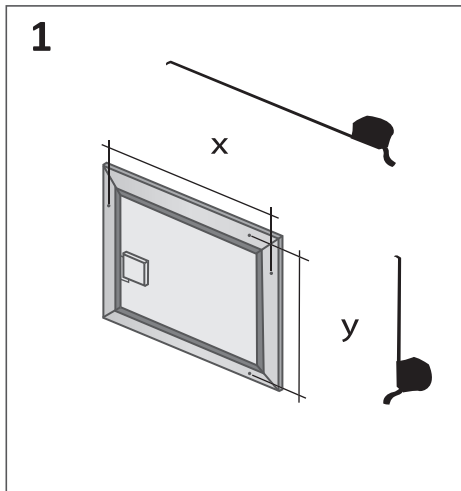
Elsie Mirror requires a dedicated electrical line



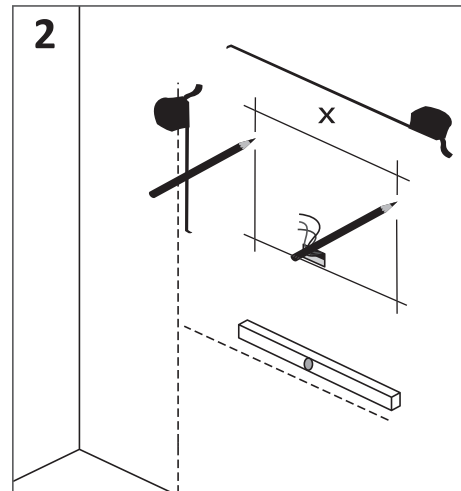
You CANNOT use an outside dimmer with the mirror



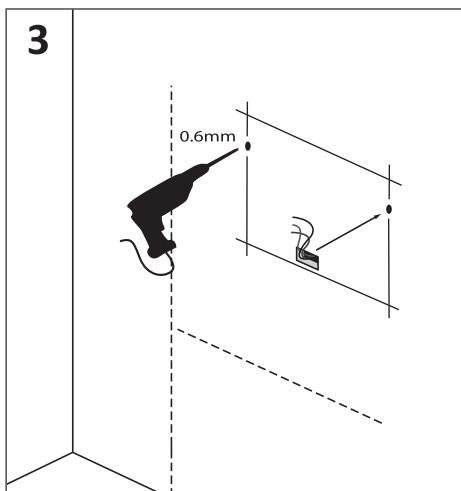
INSTALLATION GUIDE



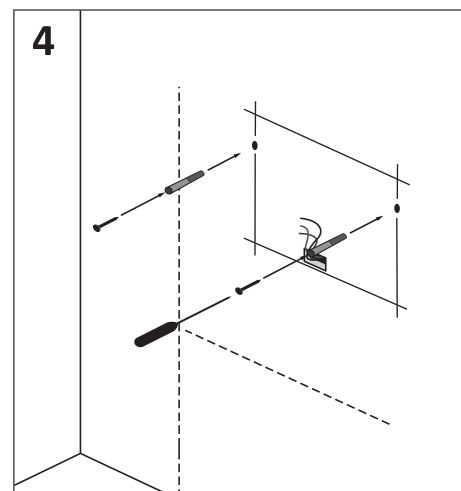
*Measure
distance
between
anchor
positions*



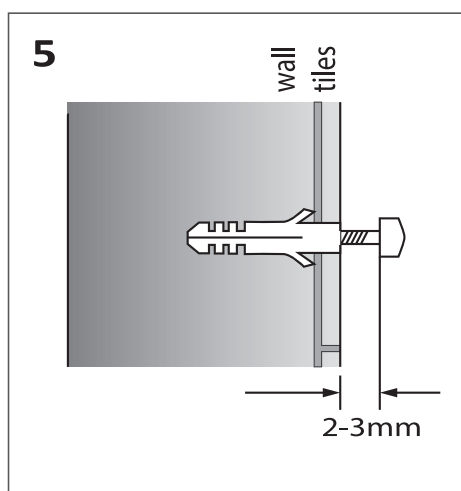
*Only Mark
one set of
hole
positions,
dependent
on your
installation
requirements
(x horizontal
installation shown)*



*Carefully
drill
each of
the holes*



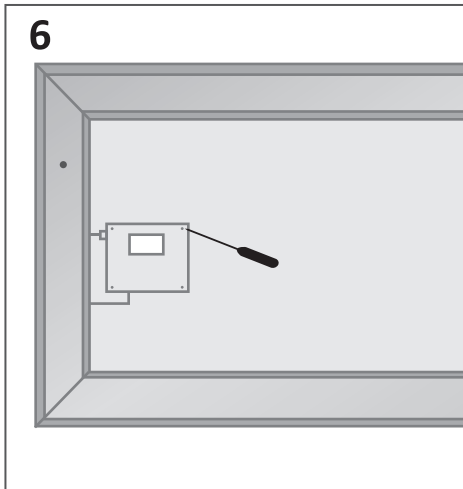
*Insert
anchors
into
predrilled
holes*



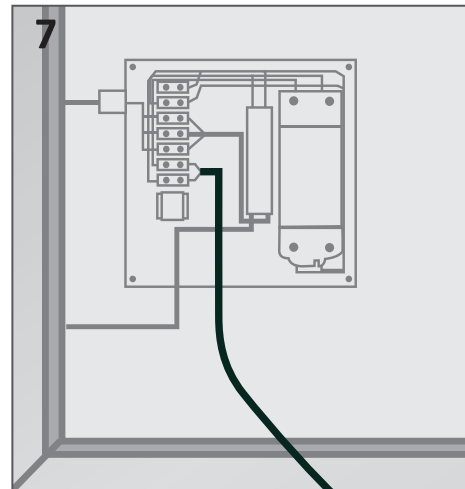
*Drive in
the
screws
leaving
2-3mm
showing*

*continued on
next page...*

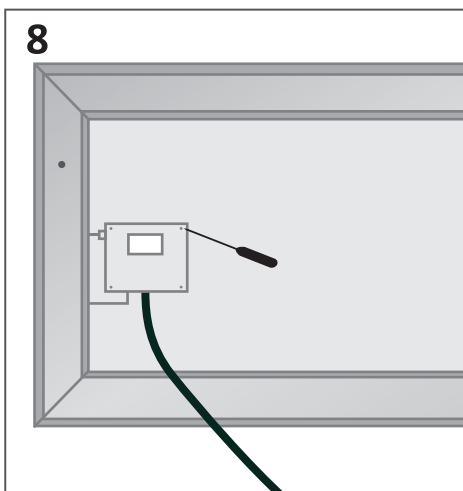
INSTALLATION GUIDE CONTINUED...



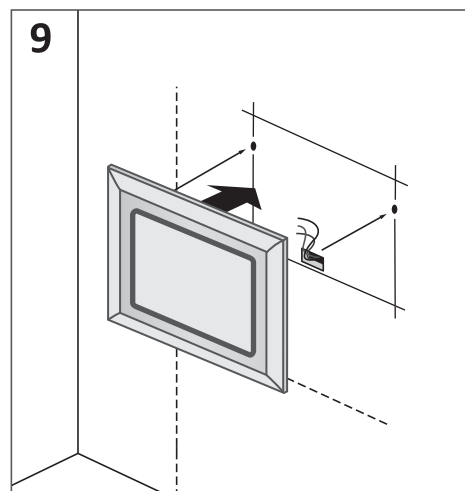
*Unscrew
the back
plate of the
electrical
box*



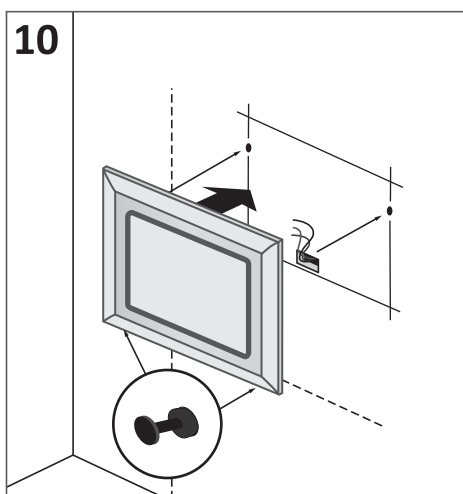
*Make the
electrical
and
ground
wire
connection*



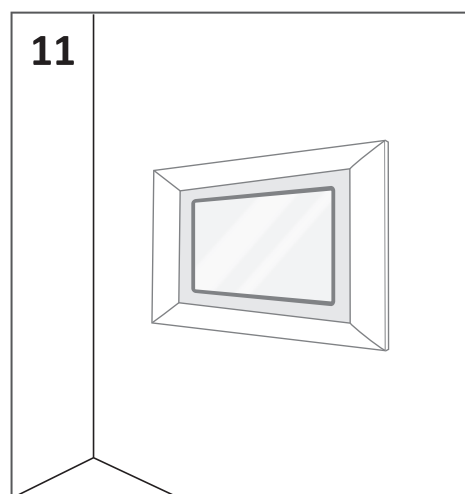
*Close the
back panel*



*Hang the
mirror
with care
onto the
screws
making
sure it's
secure*



*In case of
the wall
not
having an
even
surface,
use the
included
adjustors
on back
of mirror*



*Your
mirror is
now
fitted*

USE AND MAINTENANCE

- The interior is constructed of mirrored glass and aluminum. Use only a damp cloth to clean. Ammonia or vinegar-based cleaners can damage mirrors.
- When cleaning, spray the cloth, not the mirror, or surrounding surfaces. Do not use abrasive cleansers on any part of the light fixture.

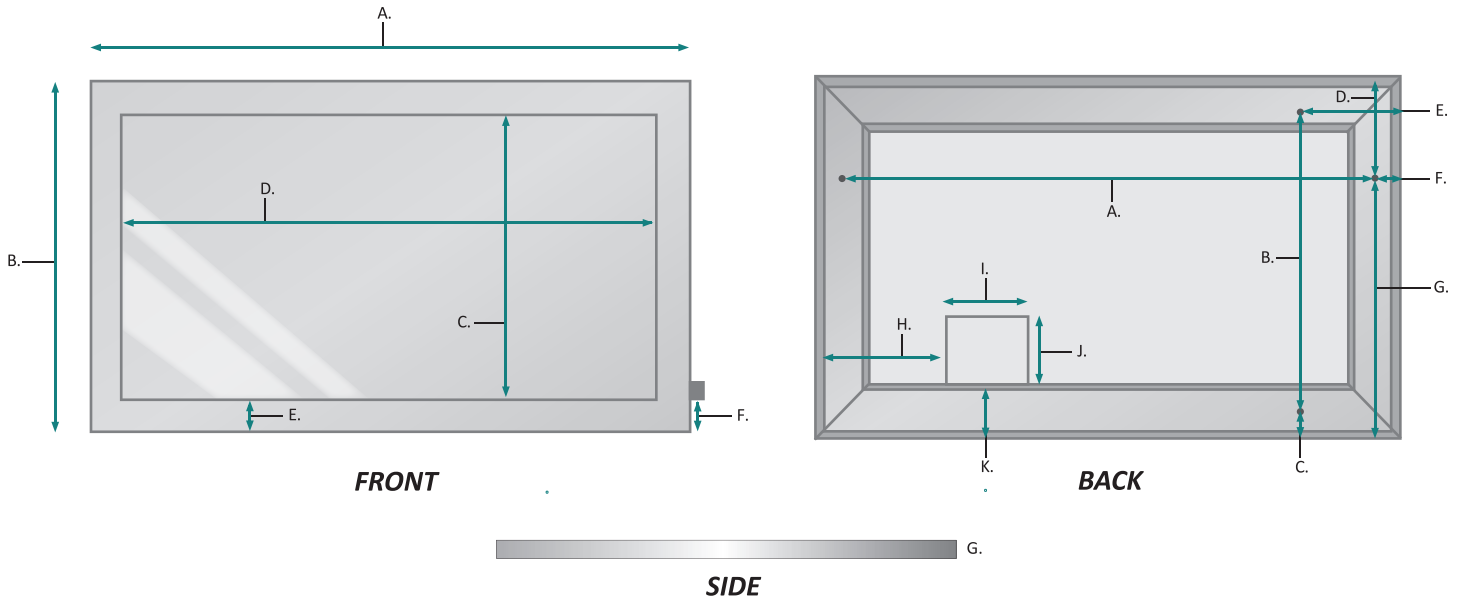
LIMITED WARRANTY

Subject to the terms and conditions specified herein, Krugg Reflections USA LLC, (“KRUGG”) hereby extends a limited lifetime warranty (this “Limited Warranty”) to original Purchasers (as defined below) of the Krugg LED Medicine Cabinet (the “Product”) with respect to certain specified components of the Product. Specifically, KRUGG, by this Limited Warranty, warrants that, for the durations specified herein, Products purchased directly from KRUGG or KRUGG’s authorized retailers will be free of defects in the material and workmanship of the Product’s electrical components, glass, mirrors, and certain mechanical components, which defects would cause the Product to substantially fail to function when subject to normal use.

COMMERCIAL WARRANTY

Subject to the terms and conditions specified herein, Krugg Reflections USA LLC, (“KRUGG”) hereby extends a limited one-year warranty (this “Limited Warranty”) to Commercial Purchasers (as defined below) of the Krugg LED Lighted Mirror (the “Product”) with respect to certain specified structural components of the Product. Specifically, KRUGG, by this Limited Warranty, warrants that, for a one-year period, Products purchased directly from KRUGG or KRUGG’s authorized retailers will be free of defects in the material and workmanship of the Product’s electrical components, glass and mirrors, which defects would cause the Product to substantially fail to function when subject to normal use.

Additional Warranty Information can be found @ <http://www.kruggusa.com>
For any installation and warranty related issues, contact us at info@kruggusa.com



FRONT & SIDE

MODELS	A	B	C	D	E	F	G
ELSIE2436	36	24	17-1/2	29-1/2	3-1/4	18	1-3/4
ELSIE4830	48	30	23-1/2	41-1/2	3-1/4	41-1/2	1-3/4
ELSIE6030	60	30	23-1/2	53-1/2	3-1/4	4	1-3/4

BACK

MODELS	A	B	C	D	E	F	G	H	I	J	K
ELSIE2436	32	19-7/8	2	4-3/4	5	2	31	15	5-1/4	6-1/4	3-1/2
ELSIE4830	44	26	2	4-5/8	5	44	25	3-7/8	5-1/4	6-1/4	3-1/2
ELSIE6030	56	26	2	4-5/8	5	56	25	8-1/4	7-1/4	6-3/4	3-1/2